

General instructions

Please read these safety instructions before using your device and store them for possible future reference.

1.

If the cord is damaged, have it repaired by the manufacturer, its service or a similarly qualified person in order to avoid any hazard.
2.

The power supply must be replaced by a new one in case of malfunction, because this power supply is not repairable.
3.

The socket outlet shall be installed near the equipment and shall be easily accessible.
4.

The product is not intended for use by persons (including children) with reduced physical, sensory or mental capacity.
Persons who have not read the manual, unless they have received explanations by a person responsible for their safety and supervision, should not use this unit.
5.

Children should be monitored to ensure that they do not play with the product.
6.

The cord should always be readily accessible.
7.

The device should not be exposed to dripping or splashing of water or liquids and no objects filled with liquids, e.g.flower vases, should be placed on the product.
8.

The normal ventilation of the product shall not be impended for intended use.
9.

It is recommended to leave a minimum distance of 10 cm around the unit to ensure sufficient ventilation.
10.

Open flame sources, such as candles, should not be placed on top of the device.
11.

The device is intended for use only in a temperate climate.
12.

CAUTION:
Danger of explosion if batteries (Remote Control) are incorrectly replaced or not replaced by the same type or equivalent.
13.

Batteries should not be exposed to excessive heat such as sunshine, fire or similar.
14.

Different types of batteries, new and used batteries should not be mixed.
15.

Batteries must be installed according to the polarity.
16.

If the batteries are worn, they must be removed from the product.
17.

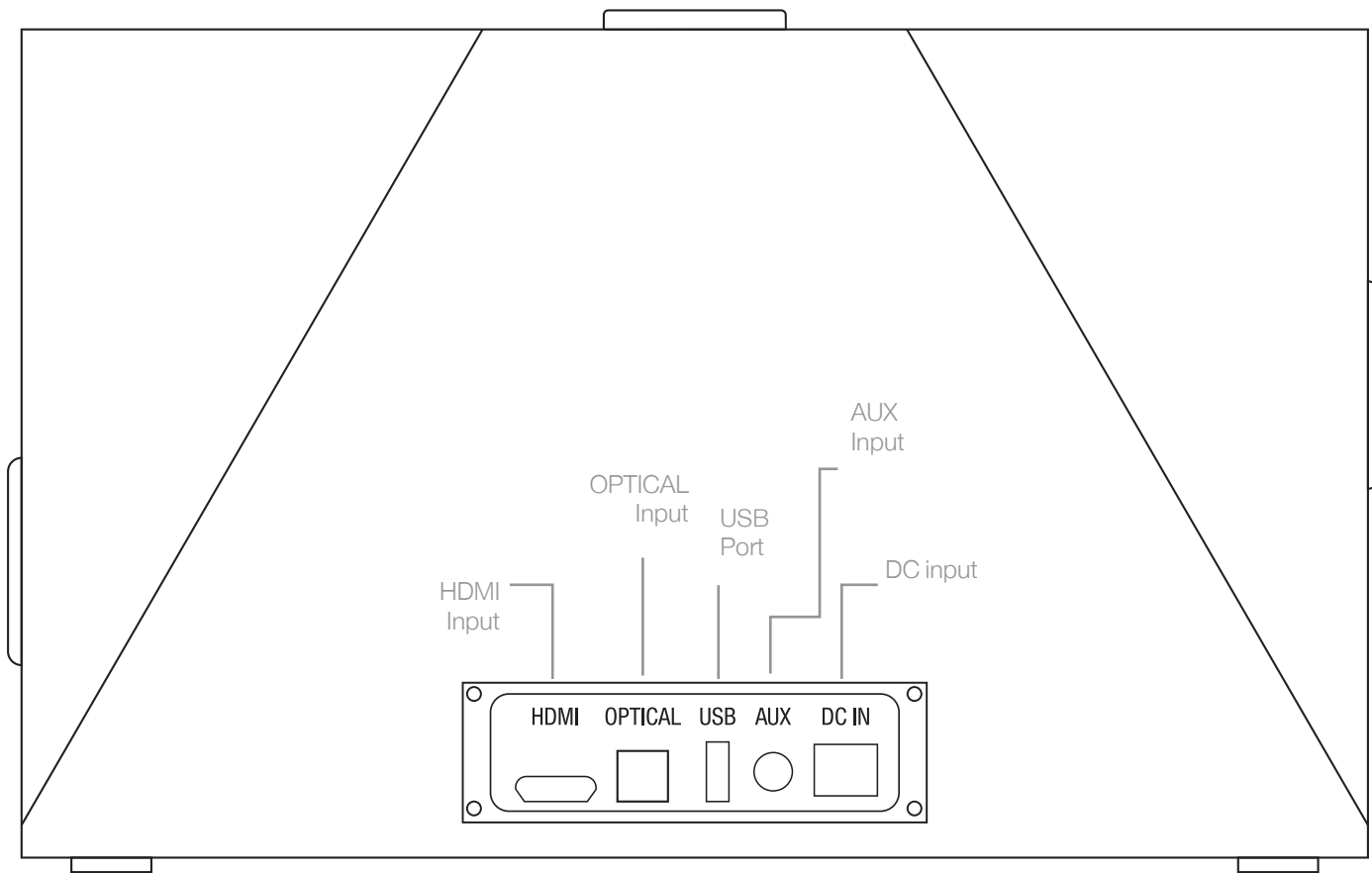
Batteries must be disposed of safely. Always use the collection bins provided for recycled items in order to protect the environment.

DECLARATION OF CONFORMITY

Radio equipment and telecommunications terminal equipment, Directive 2014/53/EU

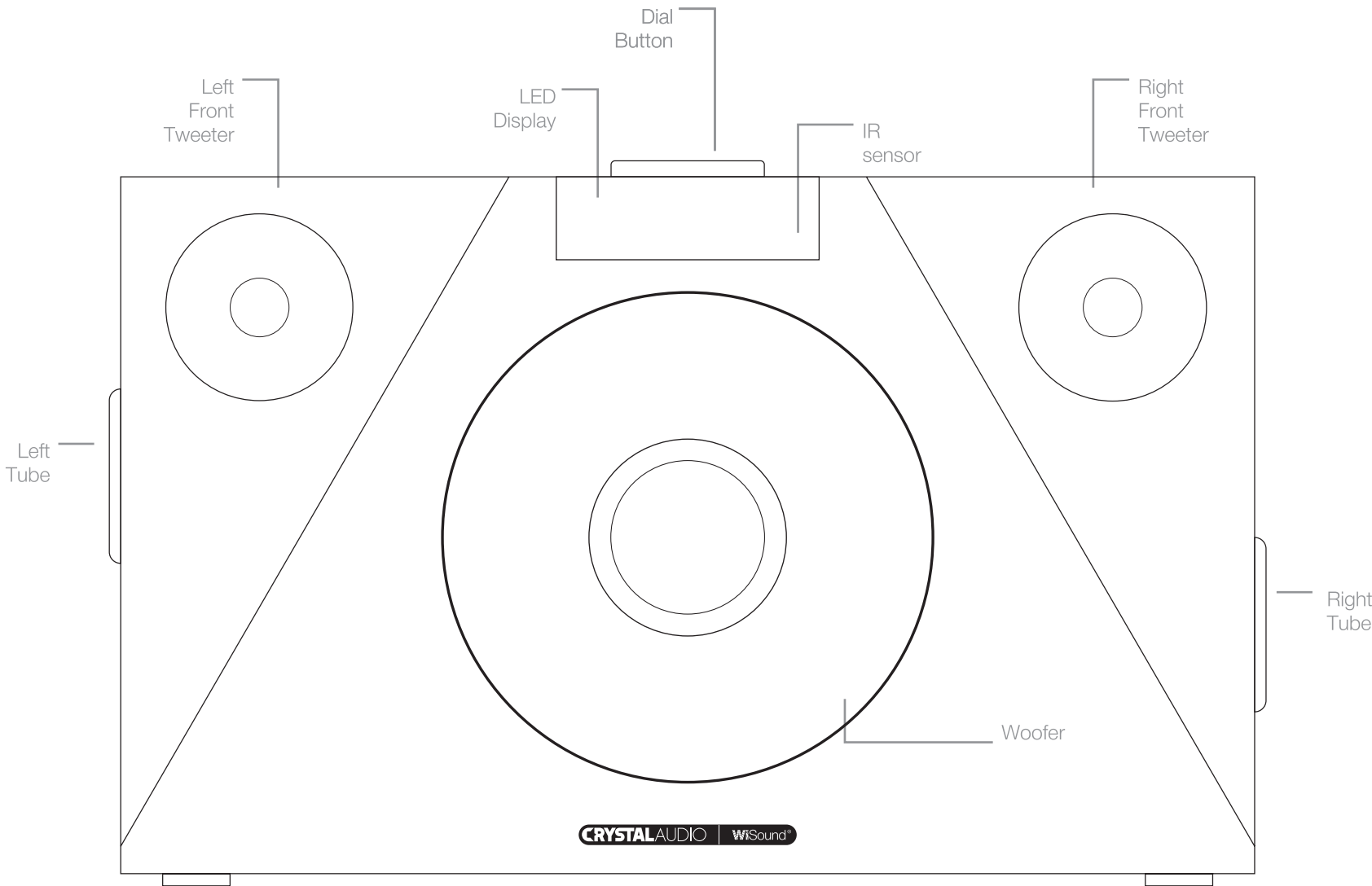


We, Crystal Audio, hereby declare that the products, **3D-74/3D-75 Wireless Speakers**, are in conformity with provisions of the Directive 2014/53/EU. The complete text of the Declaration of conformity can be found on the following webpage: **www.CrystalAudio.gr**



Rear View

Front View



D & J DAMKALIDIS SA
44 Zefyrou str., P. Faliro, PC 17564
Support: 210 9410888
email: desk@damkalidis.gr
www.CrystalAudio.gr



Designed in Europe by Crystal Audio - Assembled in China with the highest quality standards.
The Bluetooth® word mark and logos are registered trademarks owned by Bluetooth SIG Inc. and any use of such marks by Crystal Audio is under license. Other trademarks and trade names are those of their respective owners.

CRYSTALAUDIO

3D-Sound Wireless Speakers



Thank you for purchasing Crystal Audio 3D-Sound Wireless speaker

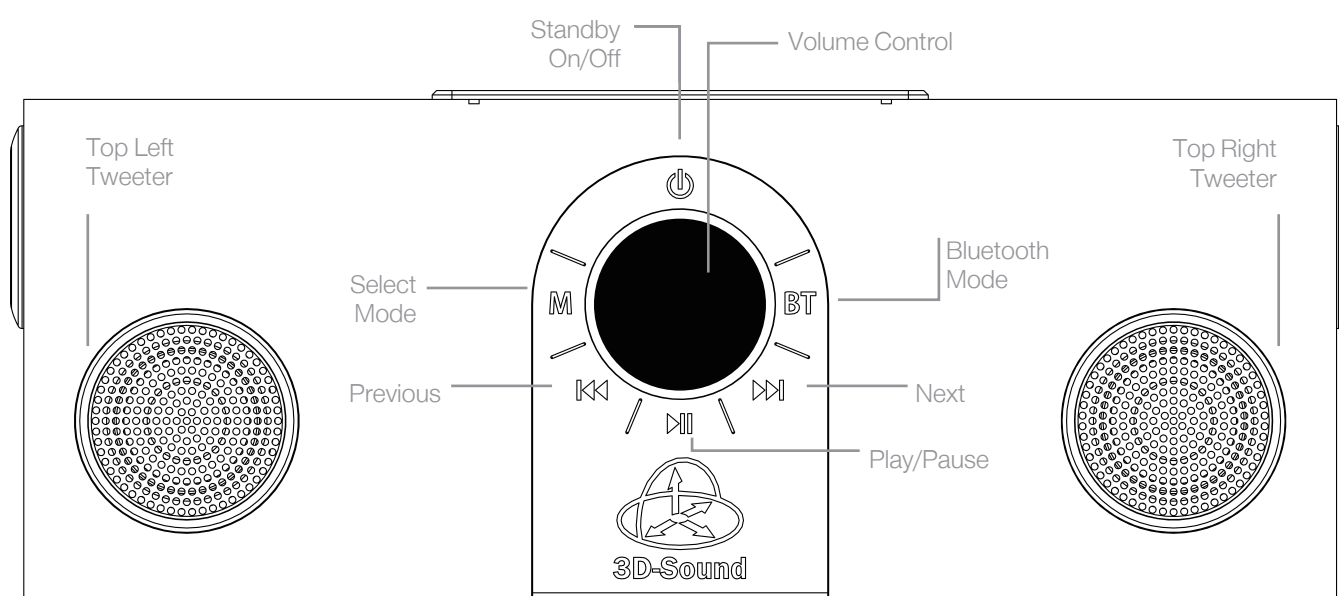
Enjoy 3-Dimensional Sound with spherical sound field 360°

- ✓ 7 drivers
- ✓ 5.25"/4" Woofers

TECHNICAL SPECIFICATIONS	3D-75	3D-74	CONNECTIVITY FEATURES	INCLUDED N THE BOX
Power Output (RMS):	2x 25W + 50W	2x 25W + 50W	• Bluetooth® v5.0	• 3D-75/3D-74 unit
Woofer:	5.25" x1	4" x1	• USB2.0 port	• User Manual
Tweeter:	2" x6	1.5" x6	✓ up to 32Gb	• Remote Control
Freq. Response:	35Hz - 20KHz	40Hz - 20KHz	• HDMI ARC	• AUX audio cable (3.5mm)
Impedance:	4Ω	4Ω	• AUX In	• Power DC adaptor
Rated Voltage:	AC 110-240V, 50/60Hz	AC 110-240V, 50/60Hz	• OPTICAL In	
Dimensions:	350x135x225mm	290x115x190mm		
Weight:	4.5kg	2.5kg		

www.CrystalAudio.com

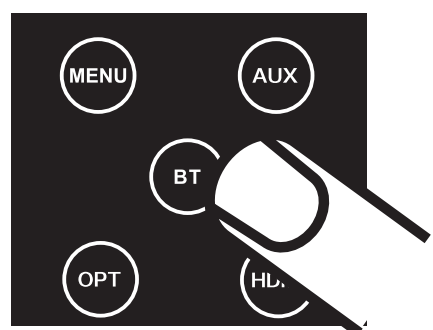
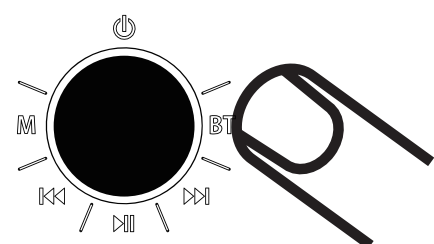
Top View



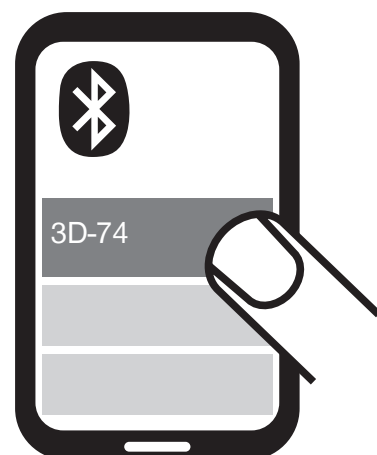
1 Pair it (wireless connection)

You can pair 3D-74/3D-75 with **any Bluetooth® enabled device** (mobile phone, tablet etc).

1. Press the **BT button** (on the unit/remote control) to activate Bluetooth Mode. The indication on the LED Display **flashes continuously** and the device automatically searches for available Bluetooth devices.



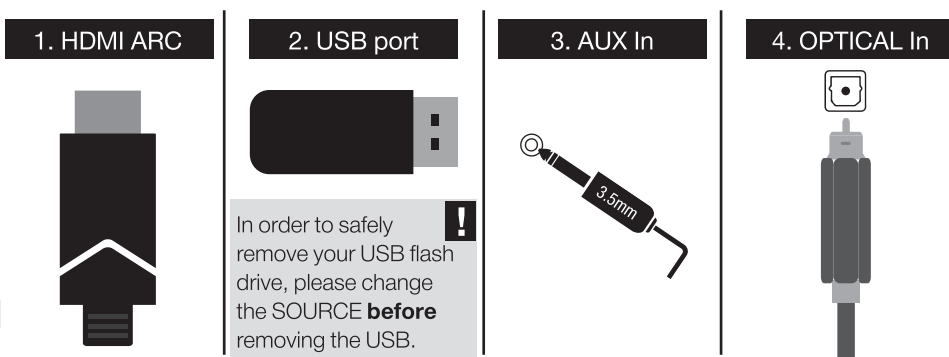
2. On your device, **turn BLUETOOTH on** and make it discoverable. Search for **3D-74/3D-75** and select it.



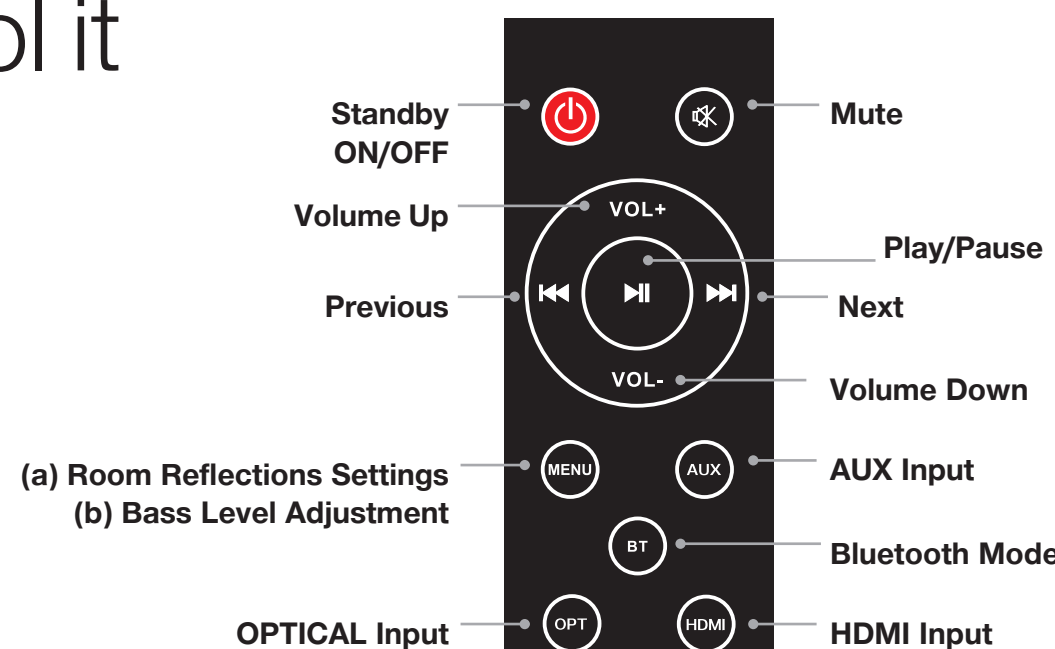
3. The indication **stops flashing**. The devices are now **paired**.

2 Connect it

1. **HDMI:** supports Audio Return Channel
2. **USB port:** Play music directly from your USB flash drive
3. **AUX IN:** Connect the 3.5mm audio cable
4. **OPTICAL IN:** Connect an Optical cable for superb sound



3 Control it



4 Place it

a. Control Reflections from adjacent Walls & large Furniture

1. Press **Menu button once** to enter rEFL mode (default mode is FREE)
2. Press **VOL- or VOL+** to select **FREE or rEFL** setting

b. Adjust Bass

1. Press **Menu button twice** to choose Bass setting
2. Press **VOL- or VOL+** to **adjust Bass**

Suggested settings for Room Adaptive Dynamic Equalization		
Placement	Reflections settings	Bass
Free	FrEE	0
Tabletop	rEFL	0
Wall	rEFL	-02
Corner	rEFL	-05

WiSound technology offers the most advanced 3-Dimensional sound experience, with 3 types of **Room Adaptive Dynamic Equalization**

1. **3D-360° Spherical Room Adaptive Equalization**
Experience **natural and pleasant sound** with **rich feeling** of space, everywhere in the room, **without the narrow sweet spot** of the conventional speakers.

2. **Dynamic Equalization**
Enjoy full sound with **dynamic Bass**, **automatically adjusted** even at very **low Listening Levels**.

3. **Reflections Gain Equalization**
Listen **without sound Distortion** and **reflection colorations** from walls and furniture.